

Pump Your Needs.



(Actual Size)
*Colors and sizes of actual
products may differ slightly
due to printing condition.

**Business possibilities
that are beyond simple ideas.**

WPX1

COMPACT,HIGH-PERFORMANCE PERISTALTIC PUMP

Novel design, rich color variations, and a palm size, surprising compact body. The WPX1 is truly a compact, high-performance peristaltic pump, which WELCO deliver to the world by focusing on the needs of the next generation. The high performance and well approved, WP1000 series, built with new tool-free and parts design and with excellent functionality and visibility, have been all packaged into an ultra-compact WPX1 model.

Ultra-compact size that simultaneously achieves high performance and space saving.



A simple configuration is achieved by incorporating multiple functions into each part.

Simple configuration

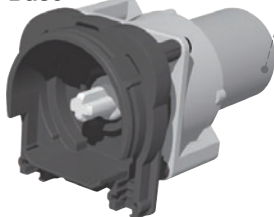
WELCO peristaltic pumps use parts manufactured entirely using high-quality Japanese technology. The pumps meet a wide range of needs to a maximum of 270ml per minute by using various combinations of parts.

Caps

The highly-transparent clear body enables the pump motor status to be checked at a glance. Special nylon materials with excellent weather and chemical-resistant abilities are used.



Base



Gear Motors

The gears are designed and developed in-house. The uniquely-configured resin planetary gear, with its excellent durability, is highly regarded. The motors used are manufactured by highly qualified Japanese companies.

Rotor Assembly

The multi-configuration rotor can accommodate various needs. Easy choice-two or four rollers.

Pump Tubes

A wide range of tubes is available, from original tubes developed in-house to general-purpose tubes. Choose the materials and size according to application.



Fitting

Tube replacement can be done easily. Choose from various types of fittings according to application.

Space-saving ultra-compact design

Handy size

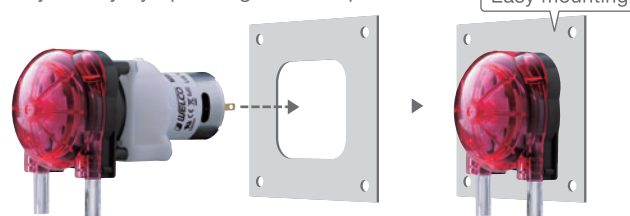
Performance and durability is equivalent to the WP1000, while achieving an ultra-compact 46-mm size that fits in the palm of your hand. The space in the device can be used effectively.



Enables one-touch mounting without using tools

Easy setting configuration

Performing the specified shape processing on the mounting parts enables an all-in-one "easy setting mechanism", which can be mounted merely by inserting the main unit to the base. The unit can be fixed without using other parts or tools. Removal can also be performed easily merely by operating the front panel.



Maintenance can be performed without using tools

Handy mounting configuration

As the cap can be mounted and removed manually without using tools, maintenance such as tube replacement can be performed speedily.



Various motors can be mounted according to need

Motor variation

The lineup also includes various types of motor for mounting, such as 6, 12, and 24VDC low-speed and high-speed motors, AC motors, stepper motors, and brushless motors, etc.



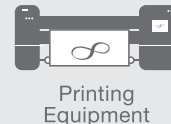
DC motor

Stepper motor

Brushless motor

Applications

In 10 years since the launch of the products, over 700,000 units have been sold and its demand consistently grows, and they are widely used in many applications around the world.



*Colors and sizes of actual products may differ slightly due to printing condition.

UL/CE/NSF/standards obtained, RoHS compatible, registered Japanese artisans, US patent obtained



WELCO Co., Ltd.

3-3-1 Sumiyoshi-cho, Fuchu-shi, Tokyo 183-0034, Japan Tel: +81-(0)42-333-7312 Fax: +81-(0)42-333-7313

Please see the web site to get more detail information. <http://www.welco.net>

