

Pump Your Needs.



(Actual Size)  
\*Colors and sizes of actual  
products may differ slightly  
due to printing condition.

**State-of-the-art Pump for your further needs.**

# WP1200

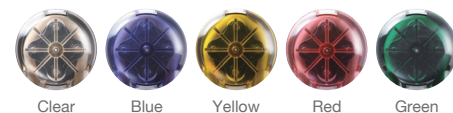
---

**HIGH-PERFORMANCE PERISTALTIC PUMP**

---

A new generation of WELCO's peristaltic pump "WP1200" is created with world qualified features of WP1000; high performance and functional elegance. WP1200 achieves large flow amount keeping with well known "Tool-free design". WELCO continues to aim for higher goals.

# A maximum of 1400 ml/min with a simple design and high performance.



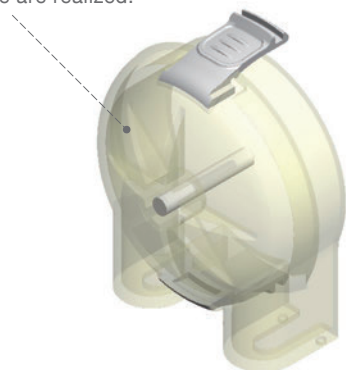
A simple configuration is achieved by incorporating multiple functions into each part.

## Simple configuration

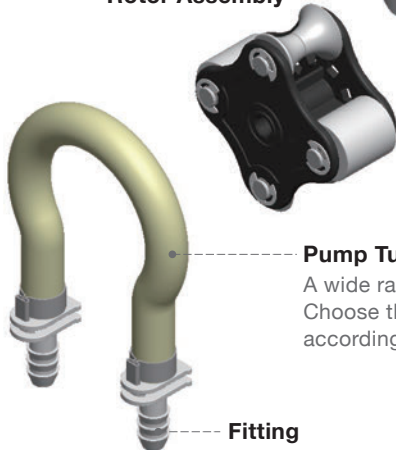
WELCO peristaltic pumps use parts manufactured entirely using high-quality Japanese technology. The pumps meet a wide range of needs to 1000-1400 mL per minute by using various combinations of parts.

### Cassette

The highly-transparent clear body enables the pump motor status to be checked at a glance. Super engineering plastic is used as the cassette material. The highest levels of weather and chemical resistance are realized.



### Rotor Assembly

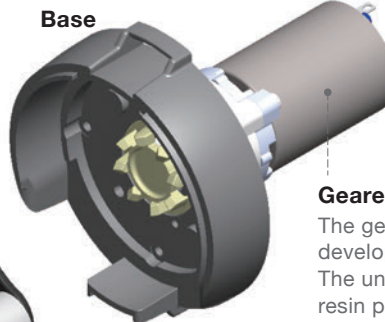


### Pump Tube

A wide range of tubes are available. Choose the materials and size according to application.

### Fitting

Insertion-type fittings for easy removal. Tube replacement can be done easily. Choose from various types of fittings according to application.



### Geared Motor

The gears are designed and developed in-house. The uniquely-configured resin planetary gear, with its excellent durability, is highly regarded. The motors used are manufactured by domestic Japanese companies with stable quality.

## Free mounting configuration

As the cassettes can be mounted and removed manually without using tools, maintenance such as tube replacement can also be performed speedily.



## Easy mounting panel (Option)

The unit can be mounted by tightening screws easily.



## A wide array of colors

5 kinds of colors are line up depending on your use.



## Super Engineering Plastics

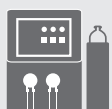
Super engineering plastics, having excellent corrosion resistance, are used for the main pump parts and enable the pumps to be used with strong acids, strong alkalis, and chemical solutions that erode general-purpose plastics. The heat resistance is also excellent, use in various environments can be supported.



\*The chemical resistance is not guaranteed for all kinds of solutions. Please ask availability before using.

## Example of use

Since the launch of the products, over 1,000,000 units have been sold and its demand consistently grows, and they are widely used in many applications around the world.



Analytical Equipment



Car wash Equipment



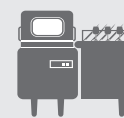
Food Processing



Laundry Equipment



Printing Equipment



Warewashing Equipment

\*Colors and sizes of actual products may differ slightly due to printing condition.

UL/CE standards obtained, RoHS compatible



**WELCO Co., Ltd.**

3-3-1 Sumiyoshi-cho, Fuchu-shi, Tokyo 183-0034, Japan Tel: +81-(0)42-333-7320 Fax: +81-(0)42-333-7337

Please see the web site to get more detail information. <http://www.welco.net>

